

Observations in Partnerships

Coming Together is a Beginning
Staying Together is Progress
Working Together is Success



How People Die on the Job

	<u>Percent</u>
Transportation incidents	43
Contact with equipment	16
Assaults, violent acts	15
Falls	13
Exposure to harmful substances	10
Fires, explosions	3



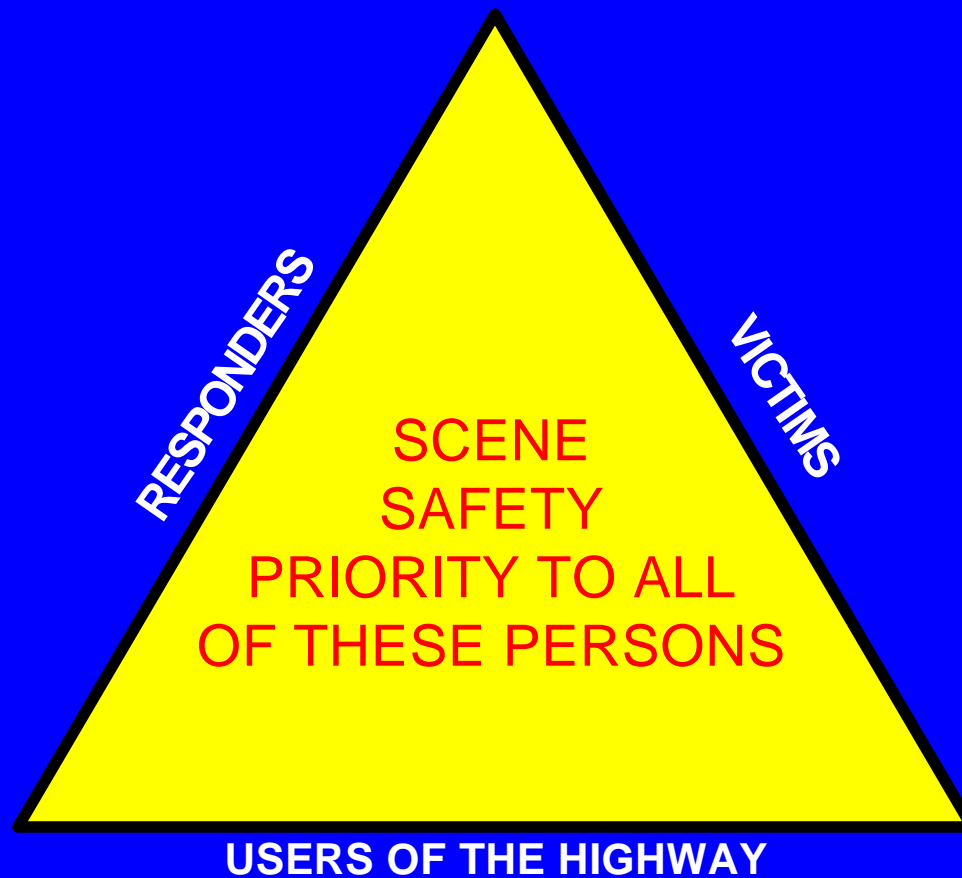
2005 National Statistics

Crash Type	Crashes	Victims
Fatal	39,189	43,443
Injury	1,816,000	2,699,000
Property Damage Only	4,304,000	-
Total	6,159,000	2,742,443
Cost of Crashes, 2000 (last avail.)	\$230.6 Billion	



MUTCD

Scope of Responsibility for Traffic Control

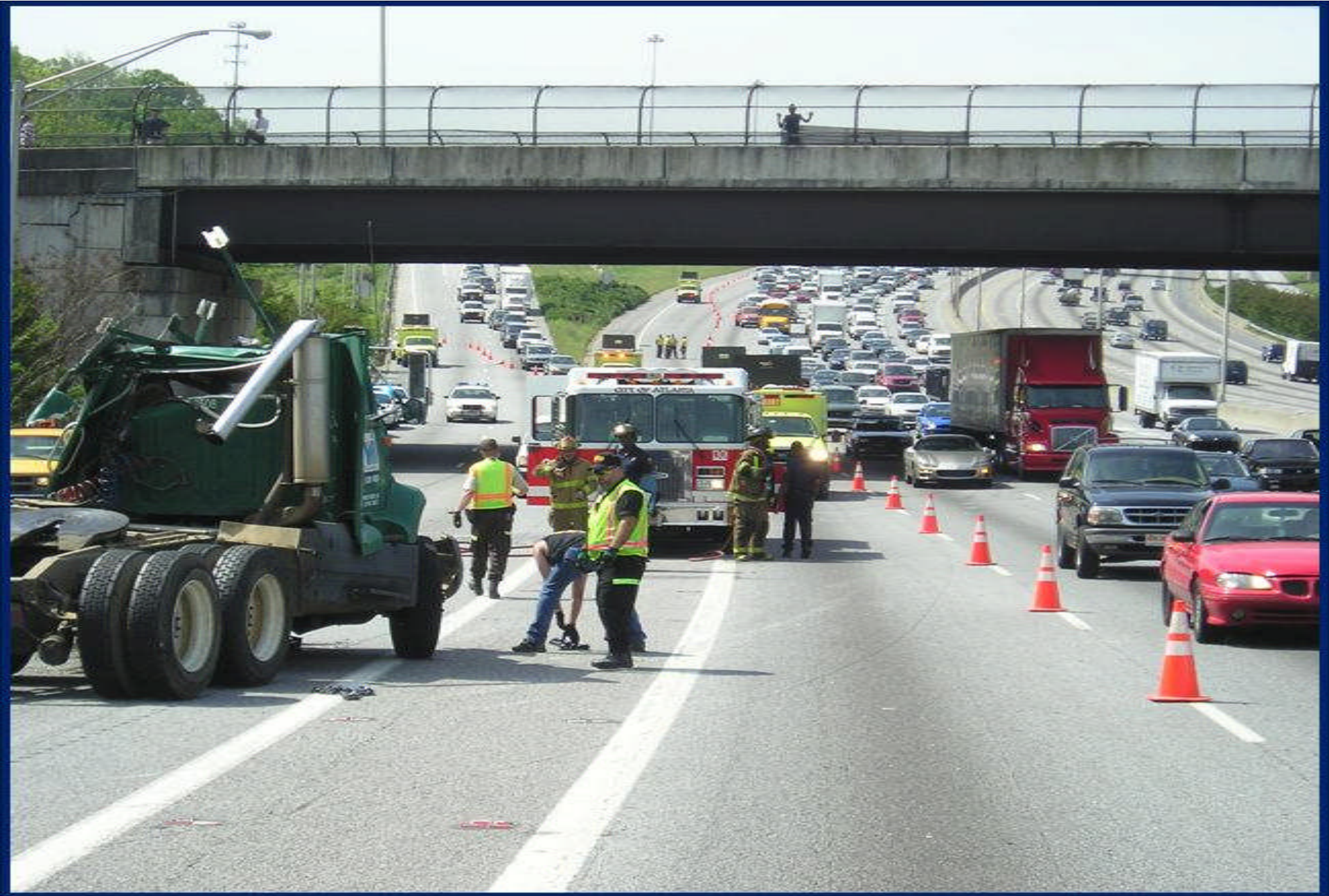


EVERY RESPONDER TO A HIGHWAY
INCIDENT IS RESPONSIBLE FOR SAFETY

How Are we Doing?

- 115 + Cities with FSP programs (Up from about 80 in 1998)
- TIM Is Good Business





Management

Some Good Partnerships

- Executive Leadership (Georgia Gov)
- Expedited Tow Program (Texas)
- Incentive towing (Florida, Washington)
- Baltimore Regional Operations (B-ROC)
- Partnerships for Investigations (Missouri)
- Open Roads Agreements (Florida)
- Reducing the Impact of Investigations (Arizona, Utah, Oregon)



FHWA

- NTIMC
- NUG
- Handbook
- Svc Patrol Study
- Resource Centers
- NHI NIMS
- TIM Self Assessments



Transportation Research Board

- Annual workshop
- Mobility studies
- Incident Management National Training Research



I-95 Coalition

- QC Workshops
- Operations Academy
- Transcom
- STIX
- TRIP
- Corridors of the Future
- NIMS
- Police Specific Training



Florida

- RISC Statewide
- SLERS
- Expand TIM Beyond Interstates
- Expand TIM Teams
- Vehicle Fluid Spill Clean up
- Open Roads Agreements



Public Private Partnerships

- State Farm
- CVS Drug Stores and Good Samaritania
- Media and TMC (True Impact)
- California FSP



What Makes Teams Work?

- Active Senior Leadership
- Trust Each Other
- Respect our Differences
- All Must Contribute
- Make use of Member Abilities
- Handle Conflict Collectively and Respectfully



TIM Groups Critical to Long Term Success

- TIM Skills Perishable
- Continuous Involvement Necessary
- Planning, Training, Performing, Measuring
- Critique, Critique, Critique



TIM
Traffic Incident
Management

Aging Roads Like Aging People

- Not As Smooth,
- Not as Fast
- Not as Healthy
- Face Lifts don't hide the truth—for Very Long

