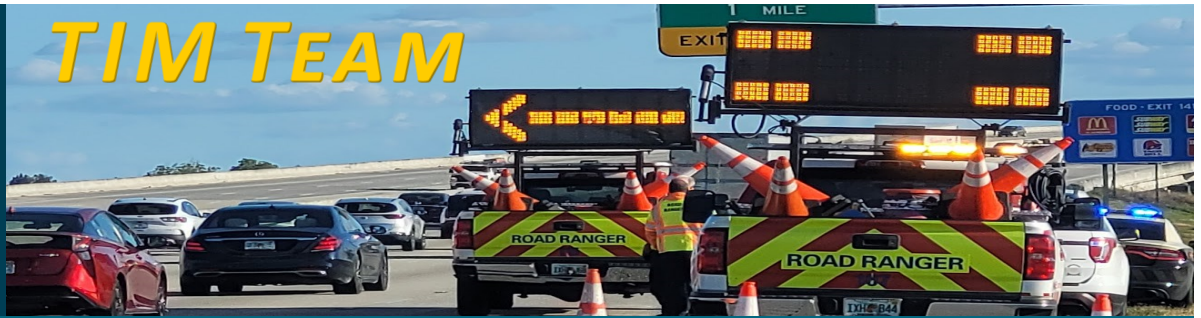




TIM TEAM



111th Edition

Polk County Traffic Incident Management Team

January 2024



INSIDE THIS ISSUE:

- First Responders Engage in Interactive Table-Top Exercises 1
- Florida Strengthens Move Over Law to Enhance Roadway Safety 1
- 2023 Annual Road Ranger Assist Report 1
- The First 15 Minutes at a Traffic Incident 2

Upcoming Events:

Next TIM Team Meeting
Thursday, April 11, 2024
10:00 am

Polk County Sheriff's Office
1895 Jim Keene Boulevard
Winter Haven, FL 33880



First Responders Engage in Interactive Table-Top Exercises

In a recent round of TIM Team Meetings led by Tom Arsenault, TIM Program Manager, responders engaged in a dynamic and hands-on approach to enhancing their expertise in traffic incident clearance. The focus of the session was a detailed After Action Review of recent major traffic incidents within their county. This innovative approach allowed responders to actively participate in tabletop exercises, providing valuable insights into their agency's response strategies.

During the exercises, each responder brought their unique expertise to the table, sharing insights on effective traffic incident clearance and outlining the specific response protocols of their respective agencies. This collaborative and interactive session fostered a comprehensive understanding of the challenges and successes encountered in recent incidents, creating a platform for responders to learn from each other's experiences.

Such hands-on exercises are instrumental in strengthening the coordination and efficiency of TIM Teams. By delving into real-life scenarios, responders not only enhance their skills but also contribute to a collective knowledge base, ultimately improving the overall response to traffic incidents. Tom Arsenault's leadership in facilitating these interactive sessions reflects a commitment to continuous improvement and a proactive approach to enhancing the capabilities of TIM Teams.



Florida Strengthens Move Over Law to Enhance Roadway Safety



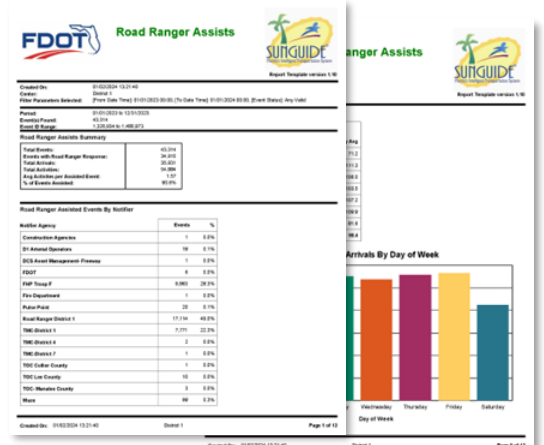
In a significant move towards bolstering roadway safety, Florida has recently updated and expanded its Move Over Law, bringing about crucial changes to protect both emergency responders and the general public. This legislative initiative aims to mitigate risks and enhance the well-being of those involved in roadside incidents.

The newly updated law, effective beginning January 1st will also include stopped vehicles that are displaying warning and hazard lights, using emergency flares or posting emergency signages and stopped vehicles with at least one person visibly present.

2023 Annual Road Ranger Assist Report

The Road Rangers play a vital role in assisting first responders on the roadways. They collaborate closely with emergency personnel, providing a valuable support system during incidents. Their seamless coordination ensures that the response time is optimized and the overall effectiveness of the emergency response is enhanced, ultimately saving lives and minimizing the impact of incidents on the roadways.

Their tireless efforts and unwavering dedication have undoubtedly made a significant impact on improving the safety and efficiency of the Florida's roadways. To view and download the 2023 Annual Road Ranger Assist report, please click on the following link: [Road Ranger Report](#)



The First 15 Minutes at a Traffic Incident



In the realm of traffic incident response, the first 15 minutes are a critical window where strategic decisions and actions can significantly impact the overall outcome of the situation. The on-scene responders play a pivotal role during this timeframe, engaging in a series of key steps that set the stage for a well-coordinated and effective response.

Size-Up the Incident: The initial step involves a rapid and comprehensive size-up of the incident. This includes assessing the nature of the incident, potential hazards, and the extent of injuries. This information forms the foundation for subsequent decision-making.¹

Determine Move or Work It Strategy: The on-scene commander must make a crucial decision regarding whether to move vehicles involved to a safer location or conduct on-site operations. This determination shapes the overall strategy for managing the incident.

Assess Resource Needs: Identifying additional resources needed is imperative in the first 15 minutes. Promptly recognizing the requirements for medical personnel, fire services, hazmat teams, or law enforcement is crucial for a well-coordinated response.

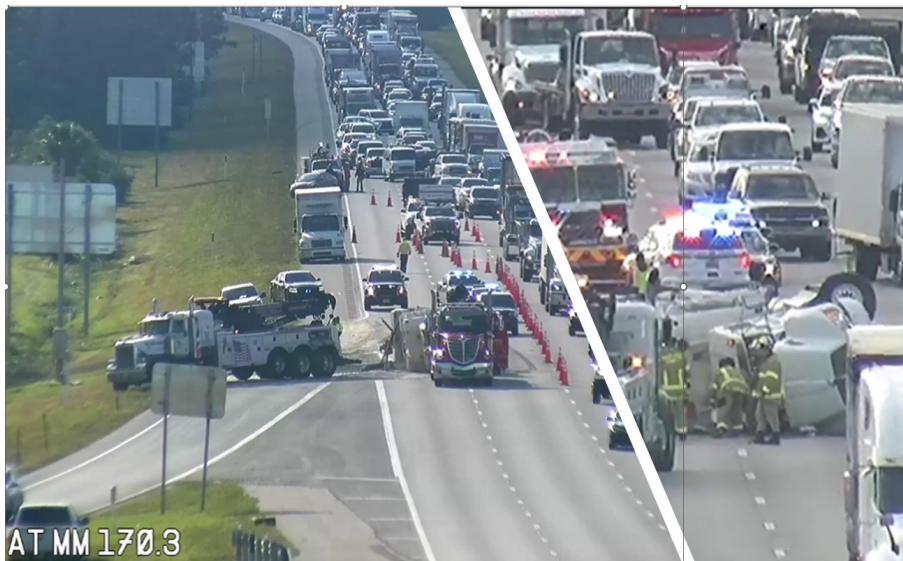
Effective Communication with Dispatch and Agencies: Clear communication is the backbone of successful incident management.

Establish Traffic Control: Protecting the work area and guiding oncoming motorists are paramount.

The Impact of Early Resource Calling: Calling in needed resources early in the response process has significant benefits. It decreases clearance times, minimizing exposure to roadside hazards for both responders and the public.

Effective Communication for Proper Operations: It ensures that proper operations are carried out, and the required resources are readily available.

Setting up Traffic Incident Management Area: Early and proper setup of a traffic incident management area is crucial. It reduces the likelihood of secondary incidents, contributing to the overall safety and efficiency of the response. Traffic control measures implemented early on create a secure working environment for responders.¹



Planning and Communication: Planning the response starts as soon as the call is received. Providing detailed information to dispatch communications is essential. This includes incident location, involved vehicles, reported conditions or hazards, responding units from various agencies, and available additional resources. Continuous communication with other responding agencies ensures a cohesive and multiagency response.

In the dynamic and multifaceted realm of traffic incident response, the first 15 minutes are undeniably critical. The on-scene responders' decisive actions during this timeframe set the tone for an efficient and coordinated response. From effective communication and resource assessment to traffic control and early incident operations, each step plays a vital role in mitigating risks, ensuring the safety of responders and the public, and ultimately achieving a successful resolution to traffic incidents.

Make sure to participate in the upcoming TIM Team meetings, where Tom Arsenault, TIM Program Manager, will deliver an in-depth presentation on this topic. The meeting will offer a **unique opportunity to hear and engage with other first responders** on the valuable insights shared on the topic.

(1) The First 15 Minutes at Roadway Incidents. Respondersafety.com. Web November 2023. http://ntimc.transportation.org/Documents/12.13.10_laneDesignation-2pg-printer.pdf

Article submitted by Brandy Boccuti, TIM Coordinator, Metric Engineering, Inc.

T I M TEAM WEBSITE!

www.swfltim.org

The Polk County TIM Team is committed to implementing the Quick Clearance principles of Florida's Open Roads Policy through the "3 Cs" of TIM: Communication, Cooperation and Coordination, and providing the public with the best real-time Motorist Information available. Team membership draws from state, regional, and local transportation agencies, public safety providers, and other organizations and companies that service the traveling public. The Teams, sponsored by the FDOT, meet bi-monthly.

Mission

The TIM Team Program brings together all agencies involved in clearing the roadway crashes with the objective of improving detection, verification, response, and clearance times to expeditiously remove a motor vehicle crash or incident from the roadway while providing the best real-time information to motorists, resulting in a safer highway environment for both incident responders and motorists

