



# TIM TEAM



106th Edition

Polk County Traffic Incident Management Team

March 2023



## INSIDE THIS ISSUE:

|  |   |
|--|---|
| National Distracted Driving Month                    | 1 |
| 2023 Florida Tow Show                                | 1 |
| Incident Command Responsibilities and Accountability | 2 |

## Upcoming Events:

Next TIM Team Meeting  
Thursday, April 13, 2023  
10:00 am

Polk County Sheriff's Office  
East Region Command  
3635 Avenue G NW  
Winter Haven, FL 33880



## National Distracted Driving Month

The month of April is National Distracted Driving Month. Distracted driving is one of the fastest growing safety issues on the roads today. Distracted drivers aren't just a threat to themselves; they are a danger to both first responders working along the highways and the traveling public. The national distracted driving effort focuses on ways to change the behavior of drivers through legislation, enforcement, public awareness, and education. Texting, which includes messaging, is considered the most dangerous type of distracted driving because it combines visual, manual, and cognitive distraction.

### Distracted Driving Statistics:

- Eight percent of fatal crashes, 14 percent of injury crashes, and 13 percent of all police-reported motor vehicle traffic crashes in 2020 were reported as distraction-affected crashes.
- In 2020 there were 3,142 people killed and an estimated additional 324,652 people injured in motor vehicle crashes involving distracted drivers.
- Six percent of all drivers involved in fatal crashes in 2020 were reported as distracted at the time of the crashes. Seven percent of drivers 15 to 20 years old involved in fatal crashes were reported as distracted. This age group has the largest proportion of drivers who were distracted at the time of the fatal crashes.
- In 2020 there were 587 nonoccupants (pedestrians, pedalcyclists, and others) killed in distraction-affected crashes.

To learn more and to download campaign materials to highlight campaign within your agency, please visit the National Highway Traffic Safety Institute at: <https://www.nhtsa.gov/risky-driving/distracted-driving>



## 2023 Florida Tow Show

"The World's Largest International Expo, the Florida Tow Show is one of America's most promising events engaging in tow show" The 2023 Tow Show will take place on April 13-15, 2023 at the Hilton Across from Disney Village in Orlando, Florida. The 2023 Tow Show schedule includes new and exciting experiences in the towing industry. The event is a **great way to learn more about the industry and connect with other incident responders**. A major focus at the show has been safety, particularly when it comes to working with vehicles on highways that need to be towed. Come support the towing Industry and your TIM Team members! To learn more about the event, please visit the following website: <https://floridatowshow.com/>



### Incident Command Responsibilities and Accountability



Arriving first responders and first-line supervisors on the scene of a major crash are faced with a multitude of initial scene management protocols that can seem overwhelming. Rest assured, first responders are quite capable of successfully navigating scene management responsibilities. Many of us have taken courses which provided training and other tools to handle these types of situations. As a law enforcement student I attended the Staff and Command course at Eastern Michigan University, a eleven month class that was held for one week every month. Most of us don't remember all of the fancy acronyms and flow charts that go along with the **National Emergency Incident Management (NEIMS)**.

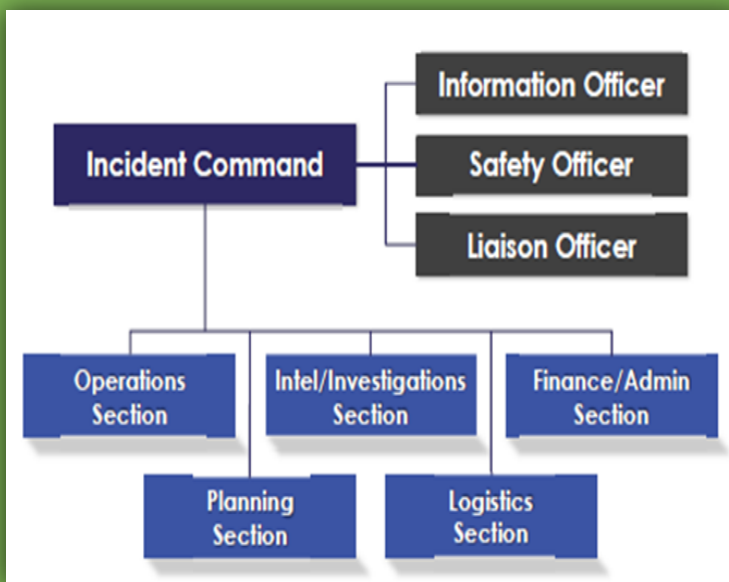
However, repetitive exposure to high-risk/high-frequency events builds a cognitive framework for us. The cognitive framework provides the tools we need to establish an initial incident management foundation. The foundation can be developed appropriately as responding resources arrive on scene. This is the **Incident Command System (ICS)** at its core.

Single Command is used typically at smaller scale incidents. When one individual is designated as **Incident Commander (IC)**, that person represents the Single Command concept. An example of IC would be a Sergeant arriving at a multi-vehicle crash with no injuries.

**Unified Command (UC)** is a joint management and authority structure in which the role of Command is shared by two or more individuals. Unified Command typically is fulfilled by a team of individuals already having authority within their discipline or responding agency. UC Allows responding agencies and/or jurisdictions with responsibility for the incident to share incident management. UC would be needed and is most appropriate for, major incidents involving multiple agencies. One of the biggest events that I was involved in as a Police Officer was Northwest Airlines Flight 255 which crashed shortly after takeoff from Detroit Metro Airport, on August 16, 1987. There were 149 passengers on board, only one survivor, a 4-year-old. Two motorists seated in their vehicles were also killed. This was a great undertaking and an excellent example of UC. **The ICS and Command Staff can be best illustrated in the graphic to the right.**

The benefits of using ICS for interstate incident response are strong. Interstate crashes occur at random and can create different working scenarios upon each crash. ICS overcomes the challenge of on-scene emergency responders by working within a multi-agency crash. ICS also helps eliminate uncertainty in command and control. Having an ICS Program improves resource coordination, communications, first responder safety, and facilitates the application of our guidelines and procedures on the day-to-day interstate Traffic **Incident Management, TIM**.

Article submitted by **Tom Arsenault, TIM Program Manager**, Metric Engineering, Inc.



### T I M TEAM WEBSITE!

[www.swfltim.org](http://www.swfltim.org)

*The Polk County TIM Team is committed to implementing the Quick Clearance principles of Florida's Open Roads Policy through the "3 Cs" of TIM: Communication, Cooperation and Coordination, and providing the public with the best real-time Motorist Information available. Team membership draws from state, regional, and local transportation agencies, public safety providers, and other organizations and companies that service the traveling public. The Teams, sponsored by the FDOT, meet bi-monthly.*

#### Mission

*The TIM Team Program brings together all agencies involved in clearing the roadway crashes with the objective of improving detection, verification, response, and clearance times to expeditiously remove a motor vehicle crash or incident from the roadway while providing the best real-time information to motorists, resulting in a safer highway environment for both incident responders and motorists*

